

SAT vs. ACT

The SAT and ACT are **accepted equally** at all colleges and universities.

SAT

Testing lasts 2 hours and 14 minutes, and there is a 10-minute break



BRING YOUR OWN COMPUTER



STAGE ADAPTIVE

Second stage is relatively easier or harder based on performance on first stage.

ACT

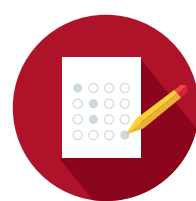
Testing lasts 2 hours and 5 minutes, and there is a 15-minute break



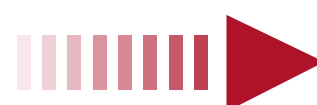
BRING YOUR OWN COMPUTER



TEST CENTER COMPUTER



PAPER AND PENCIL



LINEAR

Computer and paper versions are fixed and do not change based on performance.

START



READING AND WRITING

- 2 Stages
- 64 Minutes
- 54 Questions
- Short Passages with 1 Question Each

SCORE
200-800

1 HR

BREAK - 10 MINUTES



MATHEMATICS

- 2 Stages
- 70 Minutes
- 44 Questions
- Multiple Choice and Student-Produced Responses

SCORE
200-800

2 HR

► **TOTAL SCORE =**
400-1600 SUM OF 2 SECTIONS

ENGLISH

- 35 Minutes
- 50 Questions
- 6-7 Passages with 5 or 10 Questions Each



SCORE
1-36

MATHEMATICS

- 50 Minutes
- 45 Questions



SCORE
1-36

BREAK - 15 MINUTES

READING

- 40 Minutes
- 36 Questions
- 4 Long Passages with 9 Questions Each

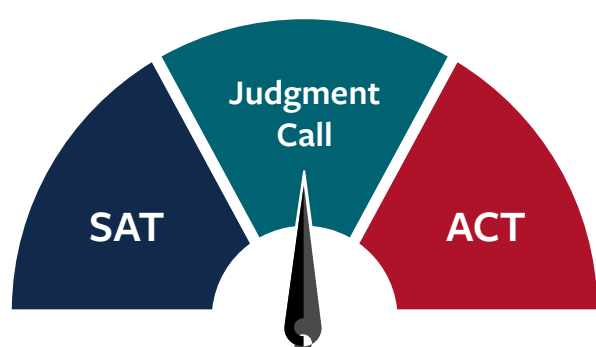


SCORE
1-36

► **COMPOSITE SCORE =**
1-36 AVERAGE OF 3 SECTIONS

HOW DO I KNOW WHICH TEST IS BEST FOR ME?

Register to take a practice test and compare scores at compassprep.com/practice-tests.



OPTIONAL ACT SUBJECTS

SCIENCE

- 40 Minutes
- 40 Questions
- 6-7 Passages with Graphs, Diagrams, or Tables



SCORE
1-36

WRITING

- Not Used for Admissions
- 40 Minutes
- 1 Prompt



SCORE
2-12



Use our tools to compare scores at www.compassprep.com/concordance

COMPASS
EDUCATION GROUP